



GSMFC Artificial Reef Subcommittee, Fall 2023

Texas Artificial Reef Program Updates

RESTORATION AND ARTIFICIAL REEF TEAM (RART) UNDER THE ECOSYSTEM RESOURCE PROGRAM (ERP)



ESTUARINE

- 2 Upper Coast
- 1 Lower Coast
- Oysters, marshes, living shorelines, breakwaters, etc.

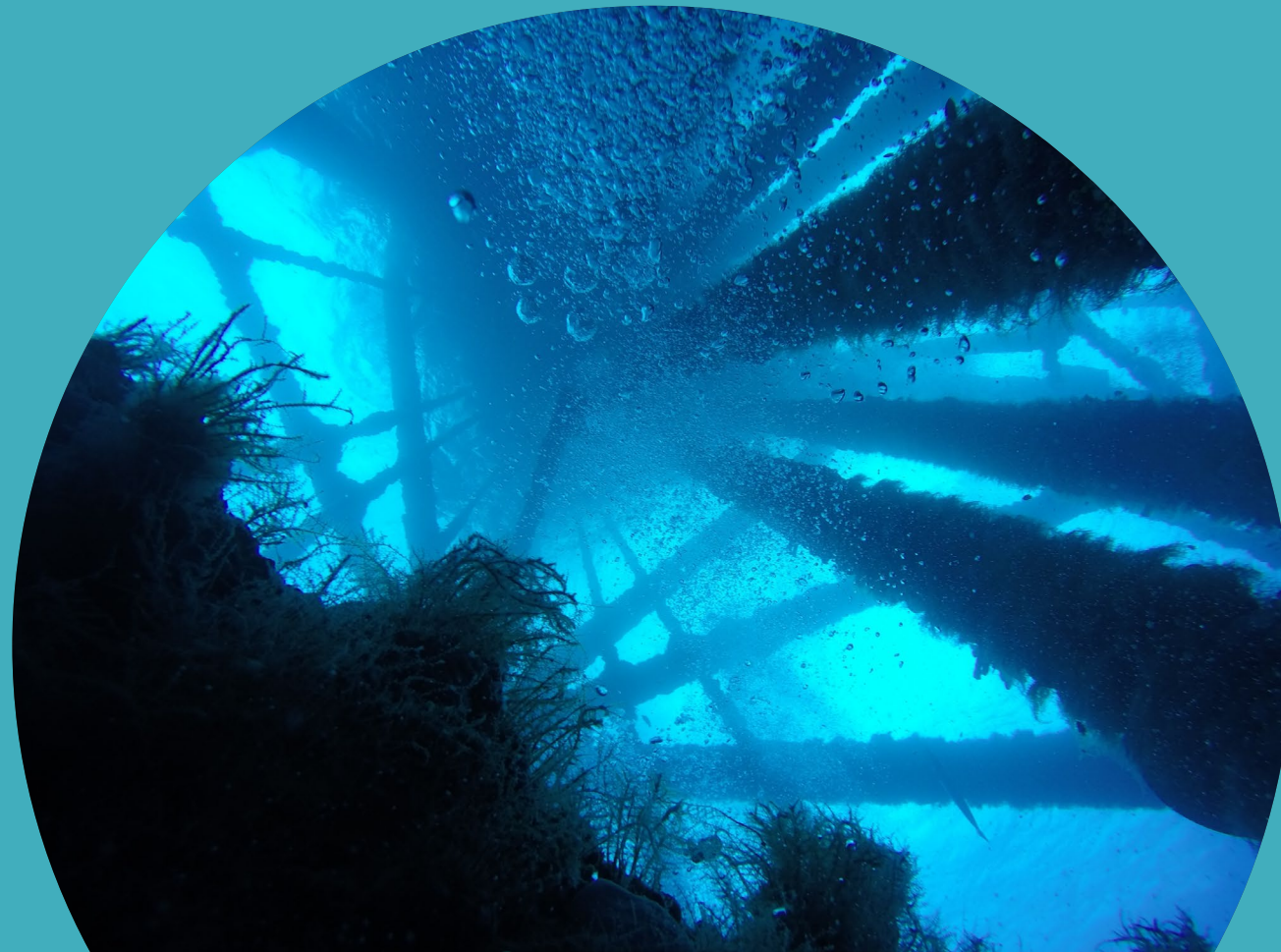


NEARSHORE/OFFSHORE

- 1 Upper Coast Coordinator (R2R + Nearshore)
- 1 Lower Coast Coordinator (DSO + Nearshore)

RIGS TO REEFS

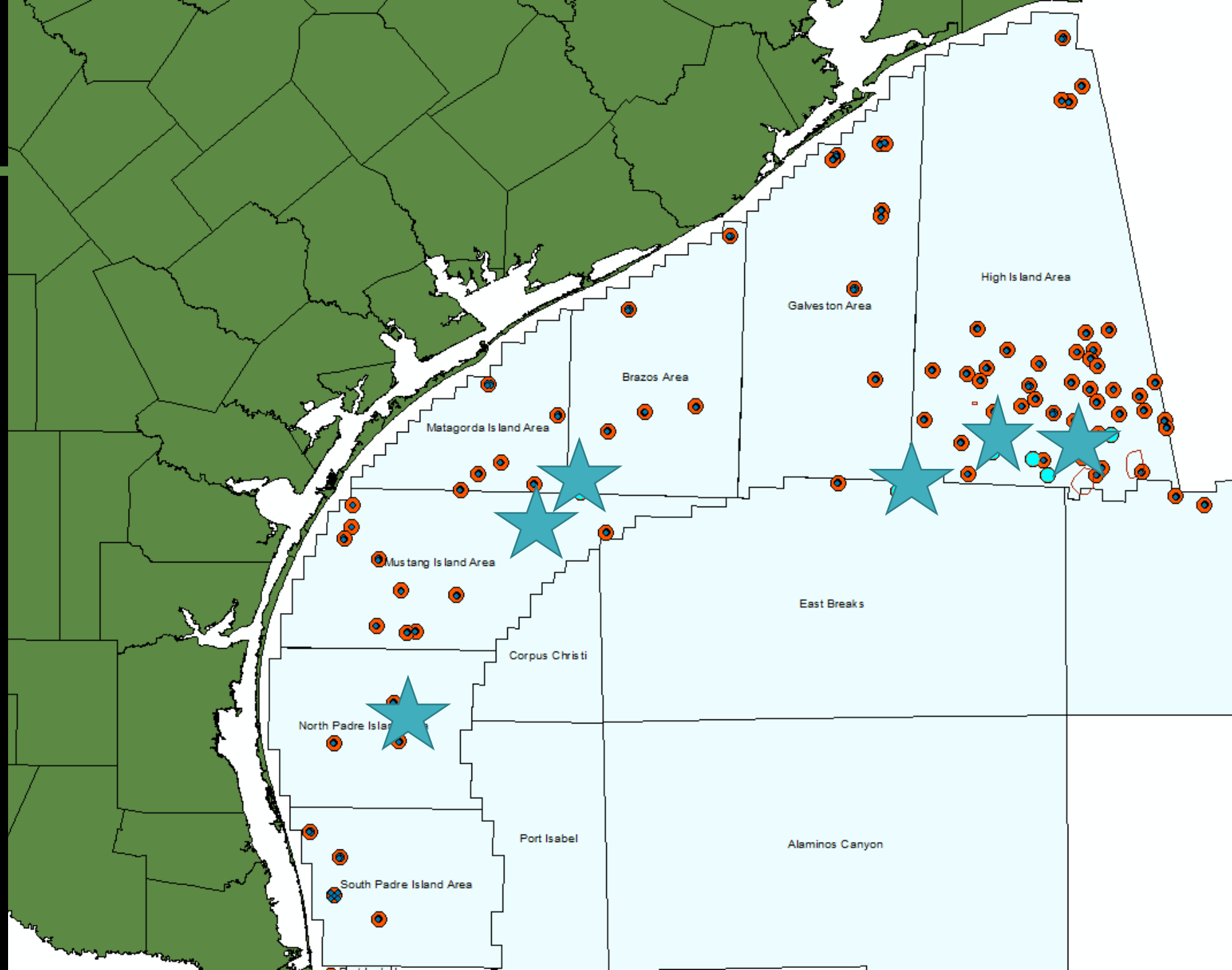
Project Updates



UPCOMING R2R

20 STRUCTURES

- Apache (Fieldwood Assets)
 - 10 platforms in High Island
- Shell
 - 2 platforms in Padre Island
- Talos
 - 1 platform in Mustang Island
- BP
 - 1 platform in East Breaks
- Quarter North?? (Chevron??)
 - 2 Platforms in East Breaks (??)
 - 1 Platform in High Island (??)
 - 2 Platform in Brazos Area (??)



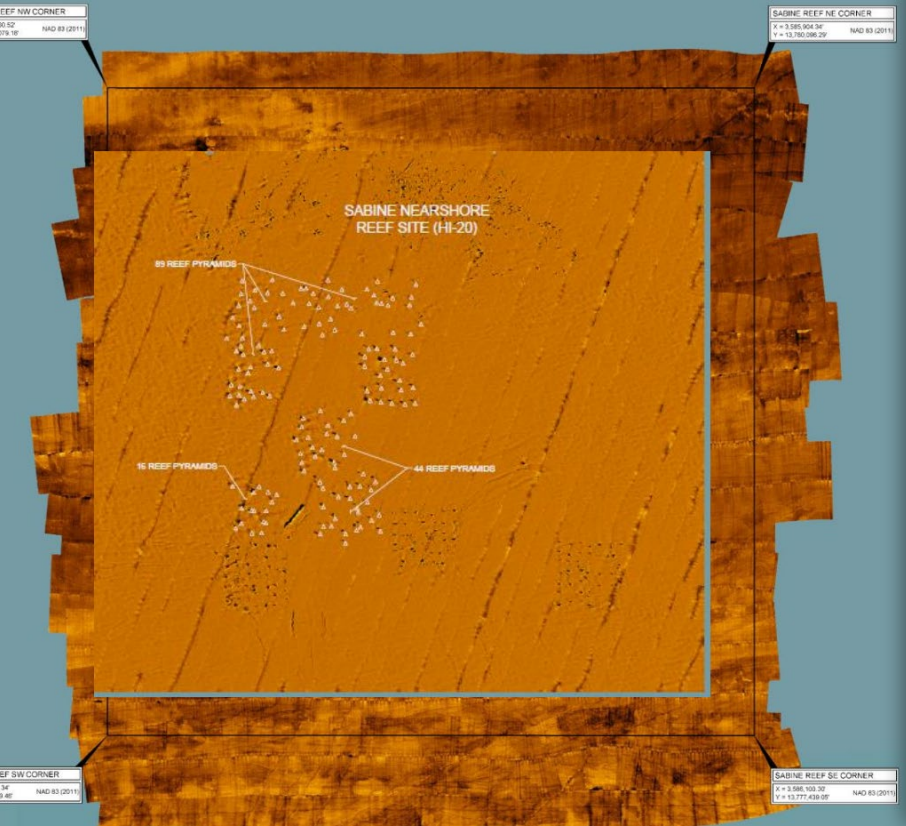
NEARSHORE REEFS

Project Updates



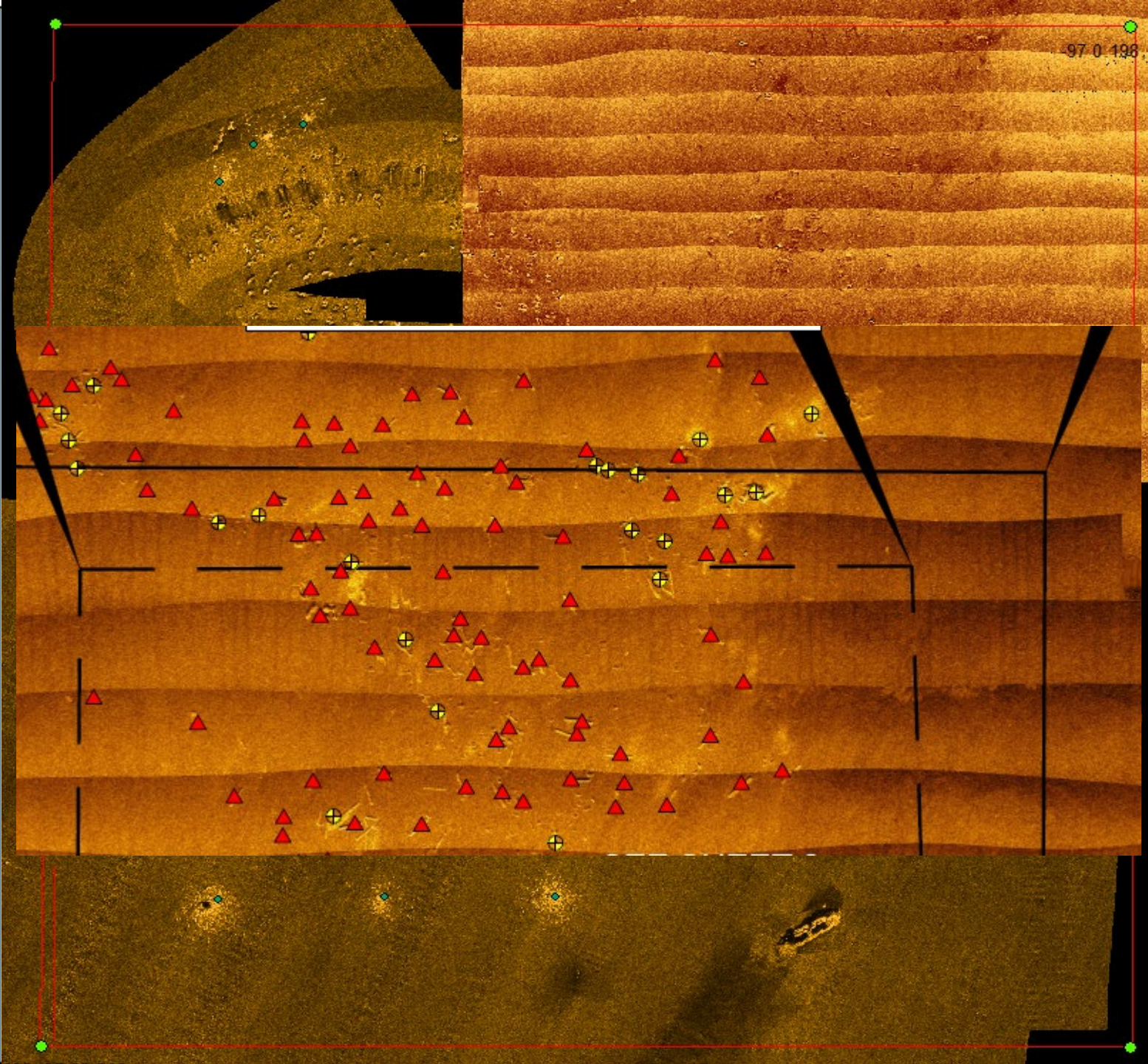
Sabine Reef

- Partnership with Friends of Sabine
 - COMPLETED 2022:
 - 100 plates and 100 pyramids
 - Coastal Management Program funding
 - ~\$250k
 - HI-20 is "full"
 - Permitting two new sites for partners
 - HI-54 (shallow)
 - HI-54 (deep)
 - Outreach signage at Sabine Boat Ramp



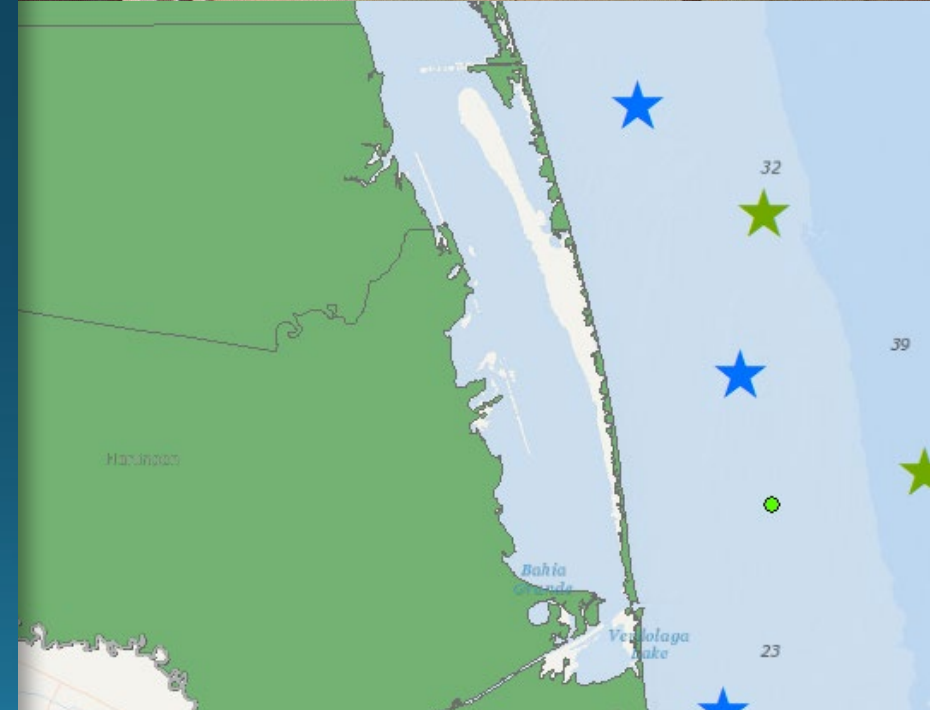
BOB HALL PIER

- Summer 2022
- Material placed at MU-775

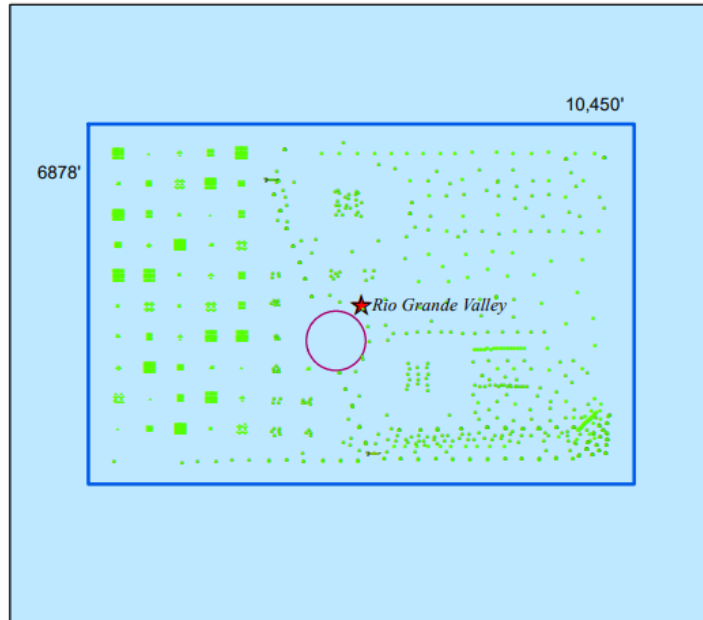
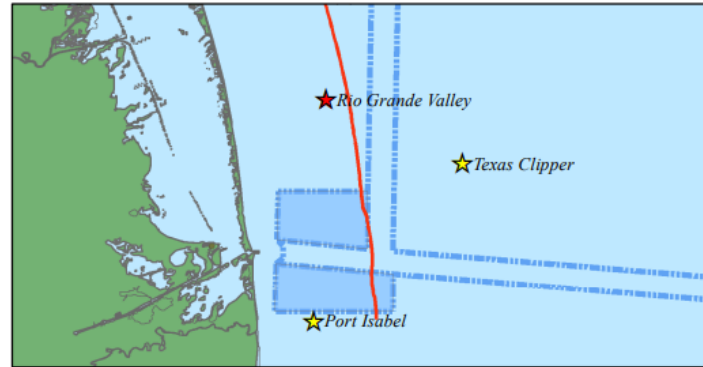
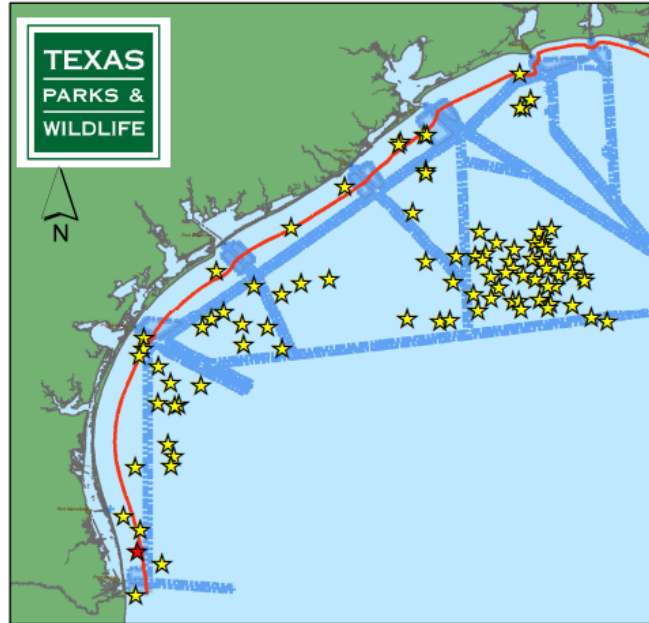


QUEEN ISABELLA

- GLO and TPWD partnership
- Gulf of Mexico Energy and Security Act (GOMESA) Project Funding
- 105 bridge spans and 421 pilings
- 3 barge loads of deck material
- 320-acre site (permit pending)



Rio Grande Valley Nearshore Reef Site (PS-1105) - 1650 Acres



Nearest Point to Point Distances

Distance Offshore: 7.4 nm
 Safety Fairways: 3.4 nm
 Anchorage: 7.7 nm
 Oil & Gas Pipelines or Easement: 8.4 nm
 State and Federal Boundary: 1.7 nm
 Obstruction or Platforms: 11.3 nm
 Nearest Natural Bank: 34.9 nm
 Distance from Jetties: 13.9 nm

Water Depth: 65 ft

29 March 2021
 For informational purposes only
 Questions: ArtificialReefs@tpwd.texas.gov

Legend

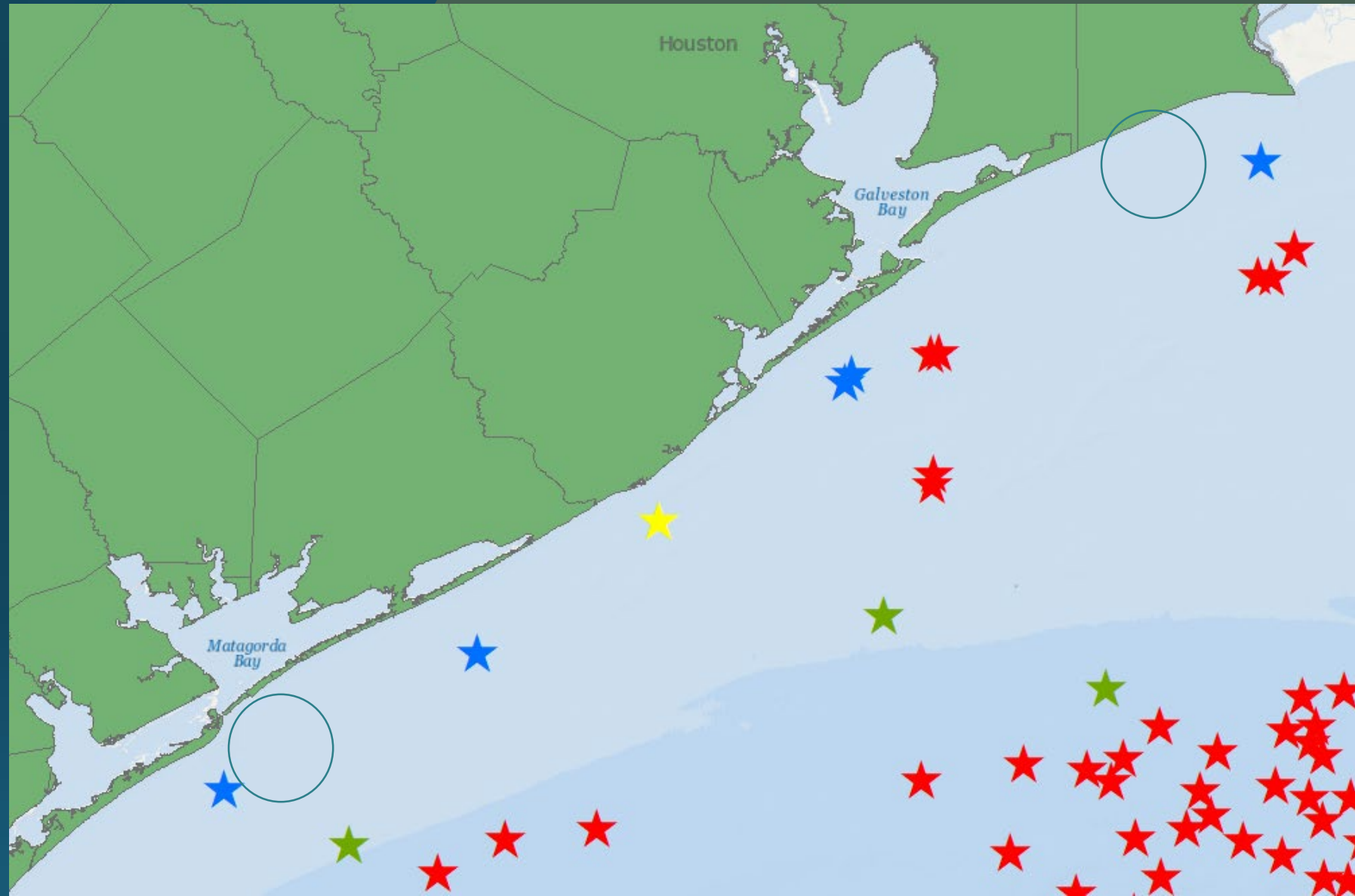
- ★ other TPWD Reef Sites
- ★ PS-1105 - Rio Grande Valley
- Avoidance Area - no material
- Established Materials
- Vessel Deployed
- Natural Banks
- GOM Federal / State Line
- Anchorages
- Fairways

Rio Grande Valley

- Partnership with Friends of Rio Grande Valley
 - 1,650-acre reef located 7.4 nm offshore and 13.9 nm from Port Isabel Jetties
 - Water depths 55 – 75 ft
 - Shrimp boat, tug boat
 - 15,000 tons of concrete rail ties
 - 5,000 tons of concrete
 - 8,000 cinderblocks
 - 300 concrete pyramids
 - 250 low-profile modules
- 2023 Update
 - STILL Working on renewing USACE permit
 - 2 shrimp boats awaiting deployment
 - Potentially permitting a new site?

RESTORE

- \$2,100,000
- Plates and pyramids
 - Port O'Connor
 - Existing reef site?
 - Sabine
 - New reef site?
 - RGV
 - Rail ties
- Deployment in 2025?





Monitoring and Research

- Summer Cruise 2024
 - Lionfish removal
 - eDNA
 - Coral surveys
 - “Kraken” surveys
 - Natural/artificial reef connectivity
 - Pre-reefing surveys
 - Long-term stations
- Switch to “directed” monitoring rather than random sampling
- Partnership with Flower Gardens Banks NMS
 - + Buoys!

Current Challenges (and Solutions)



NMFS Consultation



USACE Permitting



Asset Hot Potato



Resources